

## **Cyberport Tenant Bus Service (effective from 30<sup>th</sup> August 2024)**

### **Route 1: Between Mei Foo and Cyberport** (via Western Harbour Tunnel)

Morning trip : Mei Foo (Mei Lai Road) → Cyberport (Annex → Cyberport 3)  
 Evening trip : Cyberport (Arcade) → Mei Foo (Mei Lai Road)

#### Departure time

From Mei Foo (Mei Lai Road)	: 08:00	08:15	08:25	
From Cyberport (Arcade)	: 18:05	18:20	18:35	18:50

Passengers can connect to the MTR Tsuen Wan Line and West Rail Line at nearby Mei Foo Station.

### **Route 2: Between Tai Wai and Cyberport** (via Western Harbour Tunnel)

Morning trip : Tai Wai (Chik Wan Street) → Cyberport (Annex → Cyberport 3)  
 Evening trip : Cyberport (Annex) → Tai Wai (Chik Wan Street)

#### Departure time

From Tai Wai (Chik Wan Street)	: 08:05	08:15	08:25
	08:35	08:45	
From Cyberport (Annex)	: 18:10	18:15	18:30
	<b>19:00</b>		

Passengers can connect to the East Rail Line and Tuen Ma Line at nearby Tai Wai Station.

### **Route 3: Between Kowloon Tong and Cyberport** (via Western Harbour Tunnel)

Morning trip : Kowloon Tong (To Fuk Road) → Olympic (Hoi Fan Road) → Cyberport (Annex → Cyberport 3)  
 Evening trip : Cyberport (Annex) → Olympic (Hoi Fan Road) → Kowloon Tong (To Fuk Road)

#### Departure time

From Kowloon Tong (To Fuk Road)	: 08:00	08:15	08:35
From Olympic (Hoi Fan Road)	: 08:20	08:35	08:50
From Cyberport (Annex)	: 18:05	<b>18:55</b>	

Passengers can connect to the Tung Chung Line at nearby Olympic Station and the East Rail Line at nearby Kowloon Tong Station respectively.

**Route 4: Between Hang Hau and Cyberport** (via Eastern Harbour Tunnel)

Morning trip : Hang Hau (Man Kuk Lane) → Cyberport (Cyberport 3 → Annex)  
 Evening trip : Cyberport (Annex) → Hang Hau (Man Kuk Lane)

Departure time

From Hang Hau (Man Kuk Lane) : 07:55

From Cyberport (Annex) : 18:15

Passengers can connect to the MTR Tseung Kwan O Line at nearby Hang Hau Station.

**Route 5: Between Lam Tin and Cyberport** (via Eastern Harbour Tunnel)

Morning trip : Lam Tin (Sin Fat Road) → Cyberport (Cyberport 3 → Annex)  
 Evening trip : Cyberport (Annex) → Lam Tin (Sin Fat Road)

Departure time

From Lam Tin (Sin Fat Road) : 08:10 08:20

From Cyberport (Annex) : 18:10 18:20

Passengers can connect to the MTR Kwun Tong Line at nearby Lam Tin station.

**Route 6: Between Sheung Wan and Cyberport**

Morning trip : Sheung Wan (Wing On Centre, Connaught Road Central) →  
 Sai Wan (Connaught Garden, Connaught Road West) →  
 Kennedy Town (Davis Street) → Cyberport (Annex → Cyberport 3)  
 Evening trip : Cyberport (Arcade) → Kennedy Town (Davis Street) →  
 Sheung Wan (Wing On Centre, Connaught Road Central) →  
 Sai Wan (Connaught Garden, Connaught Road West)

Departure time

From Sheung Wan  
 (Wing On Centre, Connaught Road Central) : **08:20** 08:45

From Sai Wan  
 (Connaught Garden, Connaught Road West) : **08:25** 08:50

From Kennedy Town  
 (Davis Street) : **08:35** 09:00

From Cyberport (Arcade) : 18:10 18:40

Passengers can connect to the MTR Island Line at nearby Kennedy Town, Sheung Wan and Sai Ying Pun Station.

**Route 7: Between Central and Cyberport**

Morning trip : Central (Connaught Place, Jardine House) → Kennedy Town (Sands Street) → Cyberport 2 → Cyberport 3

Evening trip : Cyberport 2 → Kennedy Town (Davis Street) → Central (Man Kwong Street) → Hong Kong Station (Man Cheung Street)

**Departure time**

From Central  
(Connaught Place, Jardine House) : 08:30

From Kennedy Town  
(Sands Street) : 08:45

From Cyberport 2	: 17:35	18:00	18:30
	19:00	19:30	20:00

Passengers can connect to the ferries at Central and MTR Tung Chung Line at Hong Kong Station.

**Route 8: Between Causeway Bay and Cyberport** (via Aberdeen Tunnel)

Morning trip : Causeway Bay (Sunning Road) → Cyberport 2 → Cyberport 3

Evening trip : Cyberport 2 → Aberdeen (Aberdeen Praya Road) → Causeway Bay (Sunning Road)

**Departure time**

From Causeway Bay (Sunning Road) : 08:35

From Cyberport	: 17:35	18:00	18:30
----------------	---------	-------	-------

Passengers can connect to the MTR Island Line at nearby Causeway Bay Station.

**Route 9: Between Mong Kok and Cyberport** (via Western Harbour Tunnel)

Morning trip : Mong Kok (Yim Po Fong Street) → Mong Kok (Sai Yeung Choi Street South) → Olympic (Cherry Street) → Cyberport 2 → Cyberport 3

Evening trip : Cyberport 2 → Olympic (Pok Man Street) → Yau Ma Tei (City View Hotel) → Mong Kok (Yim Po Fong Street) → Mong Kok East (Argyle Street)

**Departure time**

From Mong Kok (Yim Po Fong Street) : 08:20

From Mong Kok (Sai Yeung Choi Street South) : 08:25

From Olympic (Cherry Street) : 08:30

From Cyberport 2	: 17:45	18:20
------------------	---------	-------

Passengers can connect to the MTR Tsuen Wan Line and Kwun Tung Line at nearby Mong Kok Station, MTR Tung Chung Line at nearby Olympic Station and MTR East Rail Line at nearby Mong Kok East Station.

**Route 10: Between Yau Tong and Cyberport** (via Eastern Harbour Tunnel)

Morning trip : Yau Tong (Cha Kwo Ling Road) → Taikoo Shing (Taikoo Shing Road) →  
Cyberport 2 → Cyberport 3  
Evening trip : Cyberport 2 → Taikoo Shing (Taikoo Shing Road) →  
Yau Tong (Cha Kwo Ling Road) →

Departure time

From Yau Tong (Cha Kwo Ling Road) : 08:10 08:15  
From Taikoo Shing (Taikoo Shing Road) : 08:30 08:35

From Cyberport 2 : 17:45 18:15

Passengers can connect to the MTR Kwun Tong Line at nearby Yau Tong Station and Island Line at nearby Taikoo Station.

**Route 11: Between Yuen Long and Cyberport** (via Western Harbour Tunnel)

Morning trip : Yuen Long (Wang Lok Street) → Tuen Mun (Heung Sze Wui Road) →  
Tsuen Wan (Tai Ho  
Road North Southbound → Annex → Cyberport 3  
bus stop)  
Evening trip : Cyberport 3 → Tsuen Wan (Tai Ho Tuen Mun (Heung Sze Wui  
Road North Southbound → Road) →  
bus stop)  
Yuen Long (Wang Lok Street)

Departure time

From Yuen Long (Wang Lok Street) : 07:20  
From Tuen Mun (Heung Sze Wui Road) : 07:50  
From Tsuen Wan (Tai Ho Road North  
Southbound bus stop) : 08:10

From Cyberport 3 : 18:15

Passengers can connect to the MTR Tsuen Wan Line at nearby Tsuen Wan Station, MTR Tuen Ma Line at nearby Tuen Mun and Yuen Long Station.

All routes will be running from Mondays to Fridays only (except Saturdays, Sundays and public holidays). Boarding and alighting points are indicated on the attached maps.

### **Payment Method**

Payment methods for taking tenant bus is by Octopus card.

### **Fare**

<b>Route 1</b>	<b>: Cyberport⇄Mei Foo</b> (via Western Harbour Tunnel)	<b>HK\$22.5</b>
<b>Route 2</b>	<b>: Cyberport⇄Tai Wai</b> (via Western Harbour Tunnel)	<b>HK\$25.5</b>
<b>Route 3</b>	<b>: Cyberport⇄Olympic⇄Kowloon Tong</b> : (via Western Harbour Tunnel)	<b>HK\$22.5</b>
<b>Route 4</b>	<b>: Cyberport⇄Hang Hau</b> (via Eastern Harbour Tunnel)	<b>HK\$22.5</b>
<b>Route 5</b>	<b>: Cyberport⇄Lam Tin</b> (via Eastern Harbour Tunnel)	<b>HK\$20.5</b>
<b>Route 6</b>	<b>: Cyberport⇄Kennedy Town⇄Sheung Wan⇄Sai Wan</b>	<b>HK\$10.5</b>
<b>Route 7</b>	<b>: Cyberport⇄Kennedy Town⇄Central/ Hong Kong Station</b>	<b>HK\$10.5 /</b> <b>HK\$16.5</b>
<b>Route 8</b>	<b>: Cyberport⇄Causeway Bay</b> (via Aberdeen Tunnel)	<b>HK\$16.5</b>
<b>Route 9</b>	<b>: Cyberport⇄Mong Kok</b> (via Western Harbour Tunnel)	<b>HK\$22.5</b>
<b>Route 10</b>	<b>: Cyberport⇄Taikoo Shing⇄Yau Tong</b> : (via Eastern Harbour Tunnel)	<b>HK\$20.5 /</b> <b>HK\$24.5</b>
<b>Route 11</b>	<b>: Cyberport⇄Tsuen Wan⇄Tuen Mun⇄Yuen Long</b> <b>(via Western Harbour Tunnel)</b>	<b>HK\$35 / HK\$42</b> <b>/ HK\$44</b>

### **Octopus Payment**

Passenger can use their registered Octopus card for payment of Cyberport Tenant Bus Services. Octopus Payment at Cyberport Tenant Bus Services are also eligible as a part of the Public Transport Fare Subsidy Scheme (PTFSS).

Passengers can register their Octopus card(s) for Cyberport tenant bus service by submitting the Octopus Registration Form to our Facilities Management Office.

Please be reminded that as the regulation from Transport Department, only employees of registered Cyberport Company are eligible to register their Octopus card for Cyberport Tenant Bus Services, with the Annex C form signed by company's representative and submitted to our Facilities Management Office 3 days in advance of the first ride. If you are not sure whether your company is registered, please contact your administration staff for your company or our Customer Service Department for enquiry.

For details & collection of Octopus Registration Form & Annex C Form, you may download the related document from QR Codes below, or you may contact our Customer Services Department at 3166 3111 or by email via [cs@cyberport.com.hk](mailto:cs@cyberport.com.hk).



**PTFSS**



**Annex C Form**



**Octopus Registration**



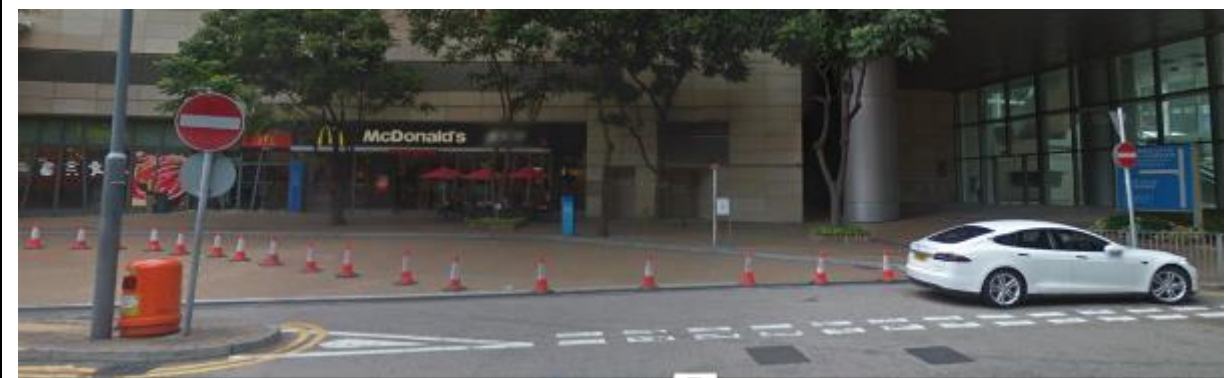
## Pick-up & Drop-Off Locations

### Route 1A: Mei Foo – Morning Services 08:00 / 08:15 / 08:25

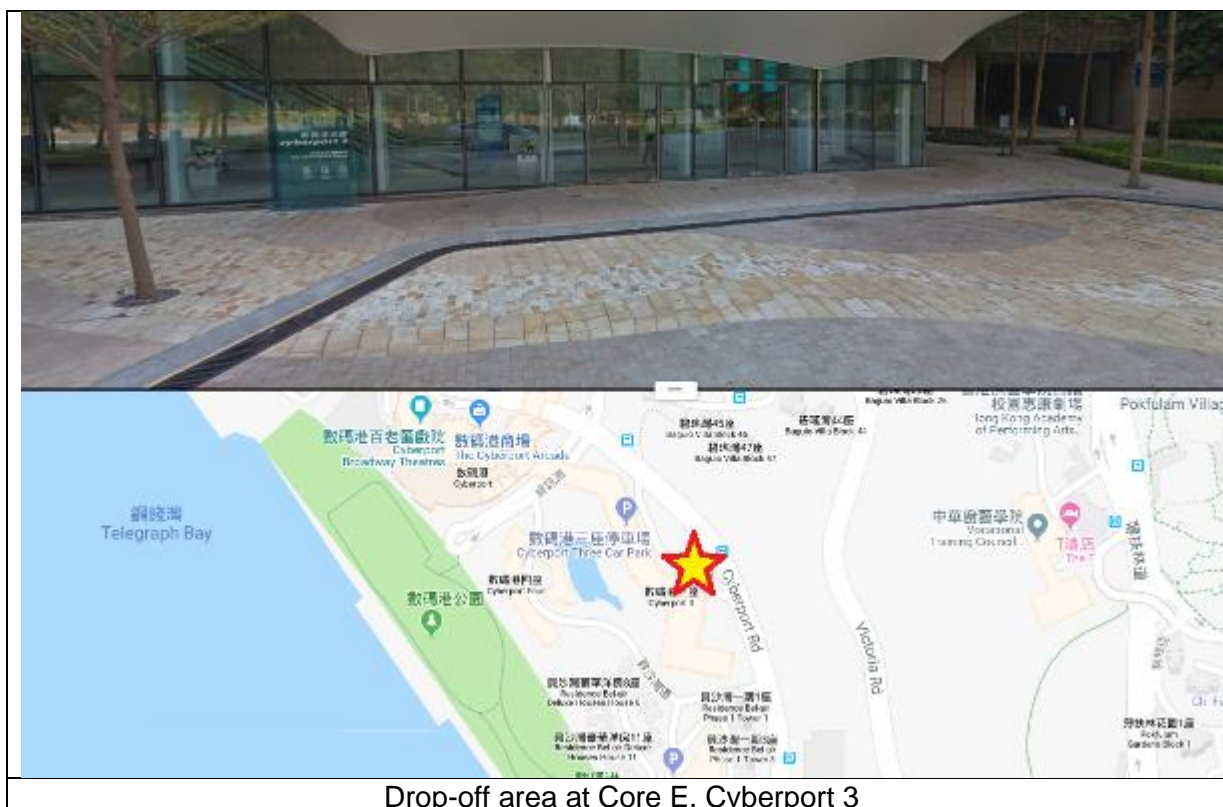
Mei Foo (Mei Lai Road) → Cyberport (Annex → Cyberport 3)



Mei Lai Road, Mei Foo



The Annex, Cyberport



Drop-off area at Core E, Cyberport 3



**Route 1B: Mei Foo – Evening Services 18:05 / 18:20 / 18:35 / 18:50**

Cyberport (Arcade) → Mei Foo (Mei Lai Road)



The Arcade, Cyberport



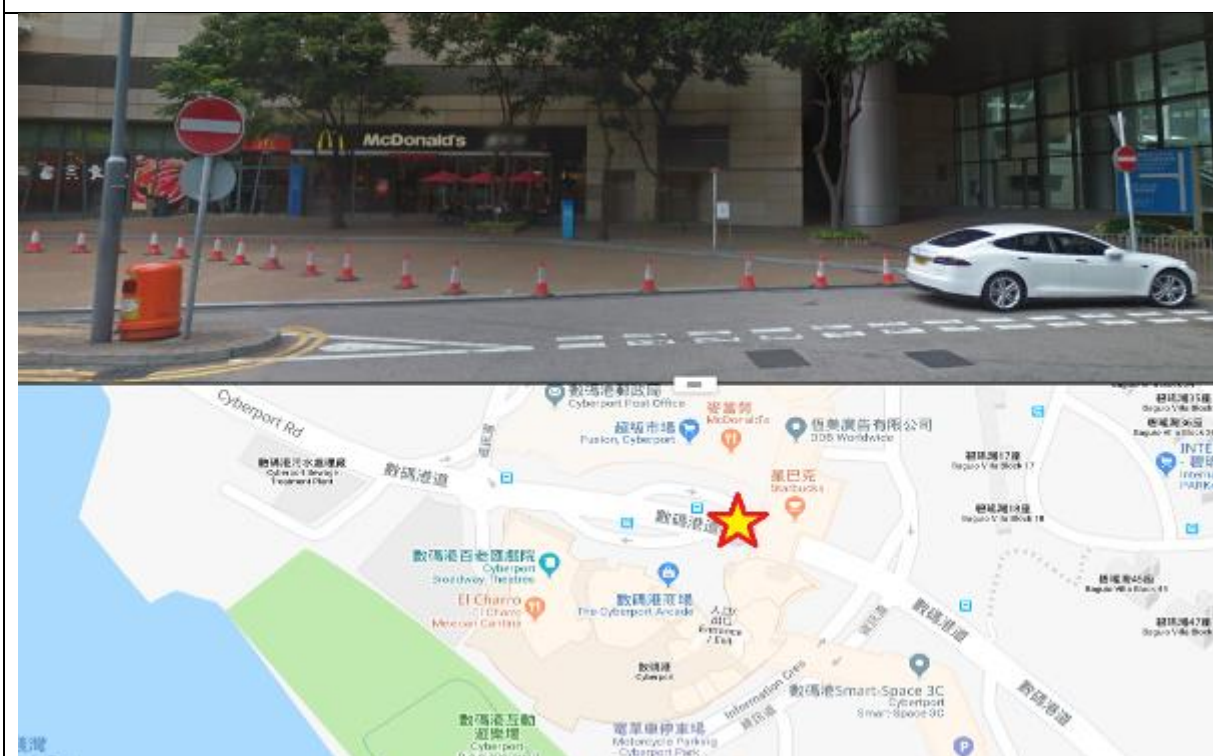
Mei Lai Road, Mei Foo

**Route 2A: Tai Wai – Morning Services 08:05 / 08:15 / 08:25 / 08:35 / 08:45**

Tai Wai (Chik Wan Street) → Cyberport (Annex → Cyberport 3)

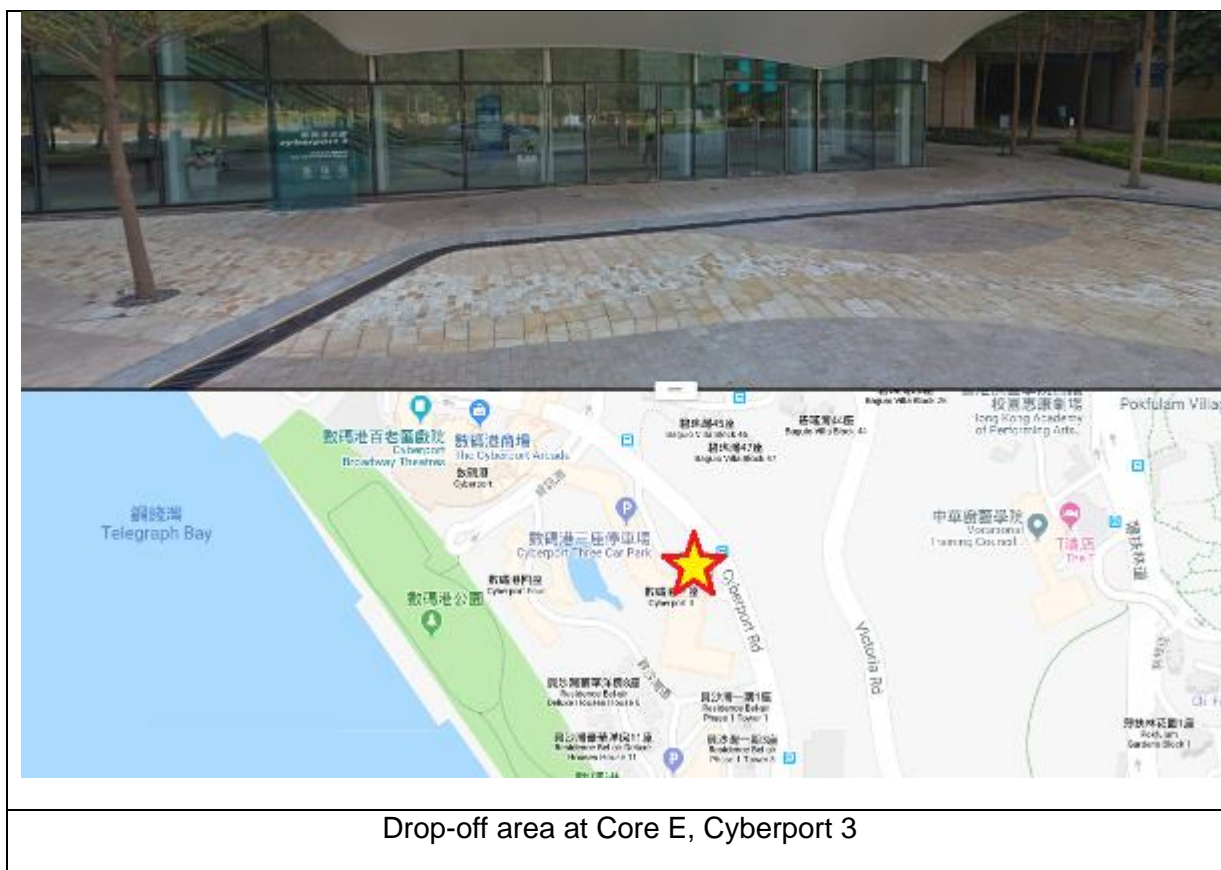


Chik Wan Street, Tai Wai (Near Po Fook Memorial Hall Shuttle Bus Stop)



The Annex (Outside McDonald's Restaurant)





Drop-off area at Core E, Cyberport 3

**Route 2B: Tai Wai – Evening Services 18:10 / 18:15 / 18:30 / 19:00**

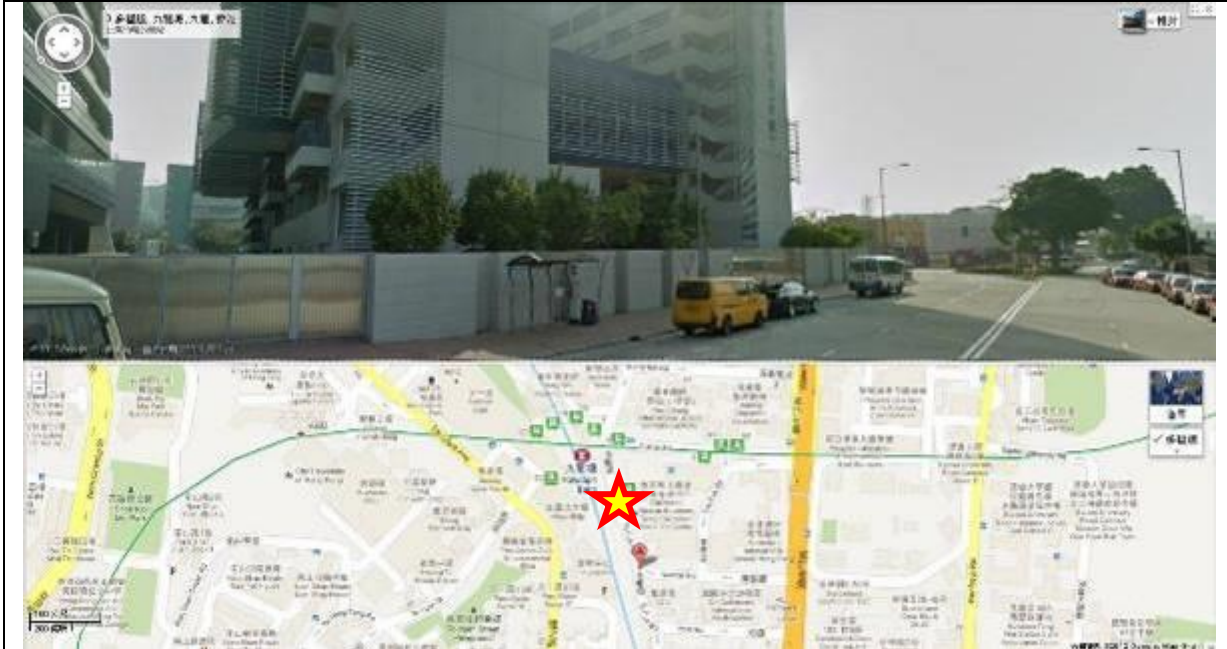
Cyberport (Annex) → Tai Wai (Chik Wan Street)





**Route 3A: Kowloon Tong & Olympic – Morning Services 08:00 / 08:15 / 08:35**

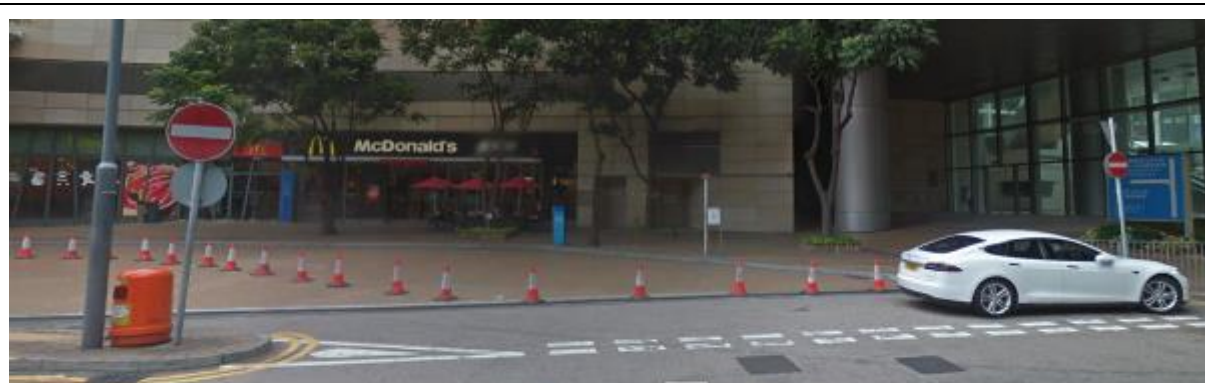
Kowloon Tong (To Fuk Road) → Olympic (Hoi Fan Road) → Cyberport (Annex → Cyberport 3)



To Fuk Road, Kowloon Tong (near Yew Chung International School)



Hoi Fan Road, Olympic



The Annex (Outside McDonald's Restaurant)



Drop-off area at Core E, Cyberport 3

Cyberport Facilities Management Office:  
Unit 404, L4, IT Street, Core A,  
Cyberport 3, 100 Cyberport Road, Hong Kong  
Tel: 3166-3111 Email: [cs@cyberport.com.hk](mailto:cs@cyberport.com.hk)



**Route 3B: Kowloon Tong & Olympic – Evening Services 18:05 / 18:55**

Cyberport (Annex) → Olympic (Hoi Fan Road) → Kowloon Tong (To Fuk Road)



The Annex (Outside McDonald's Restaurant)



Hoi Fan Road, Olympic



To Fuk Road, Kowloon Tong (near Yew Chung International School)

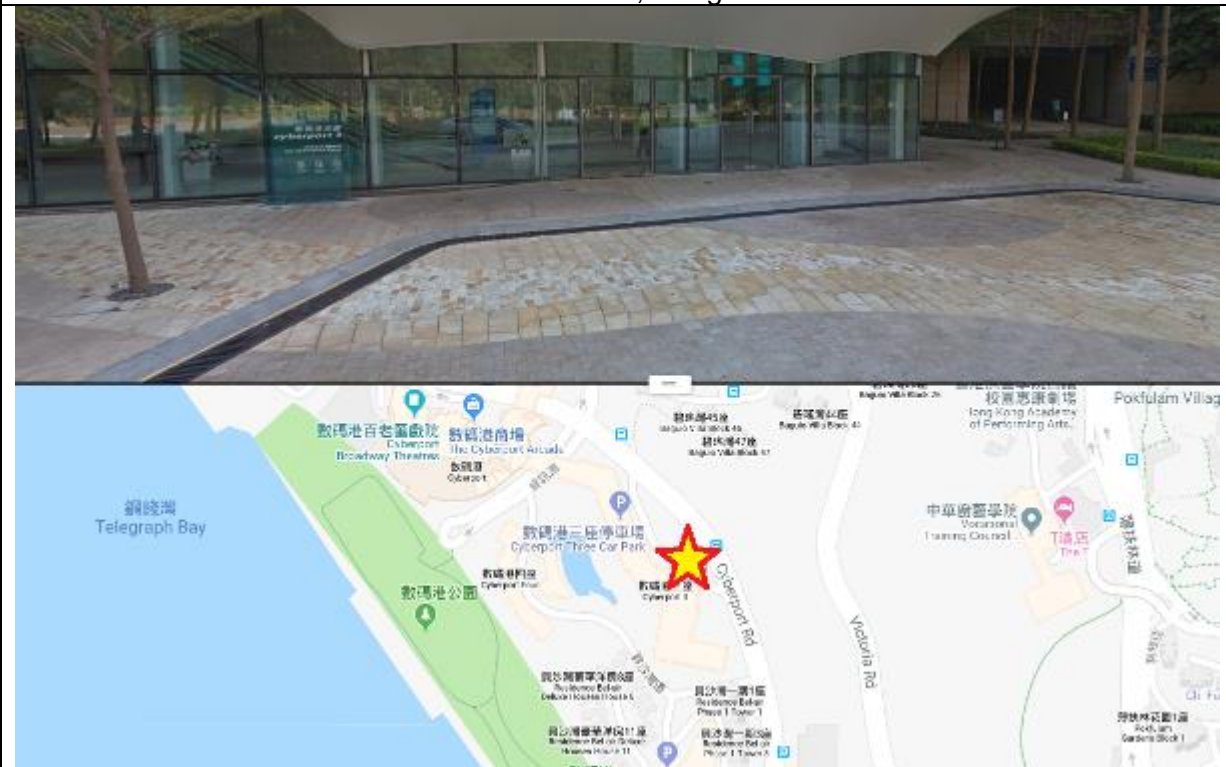


**Route 4A: Hang Hau – Morning Services 07:55**

Hang Hau (Man Kuk Lane) → Cyberport (Cyberport 3 → Annex)

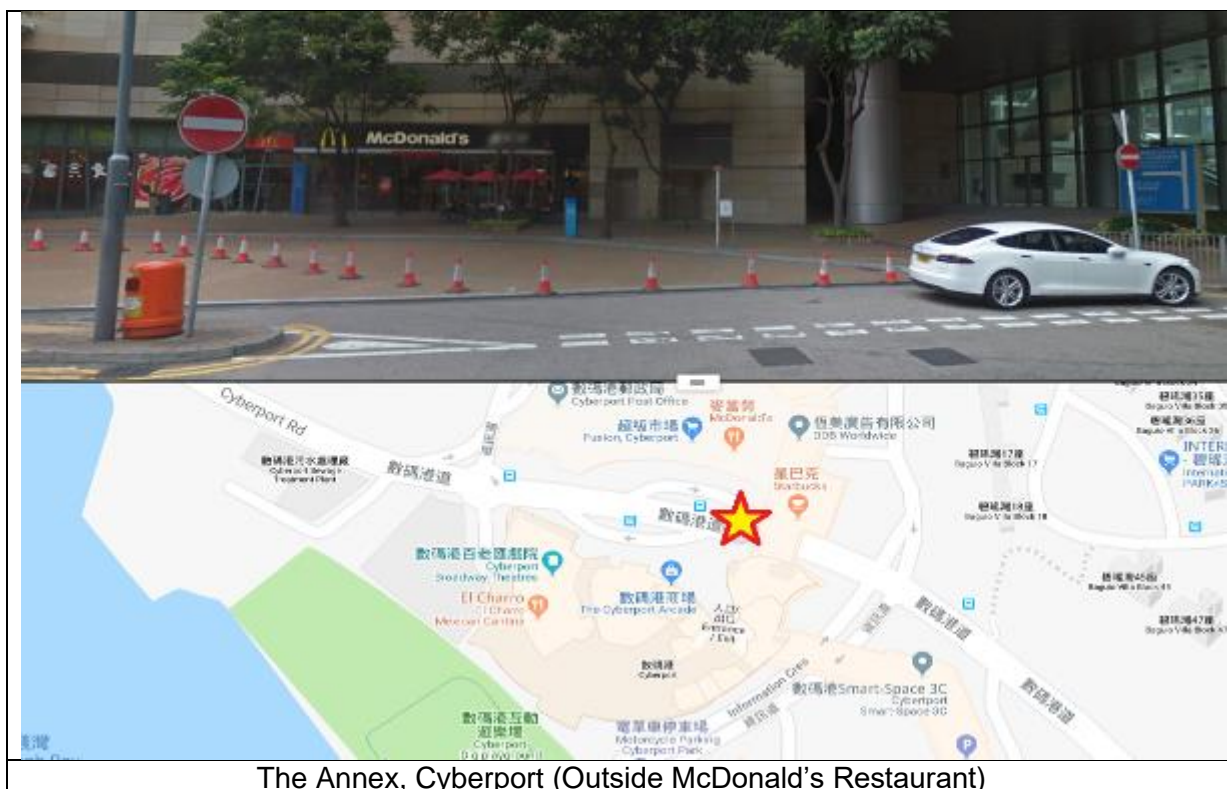


Man Kuk Lane, Hang Hau



Drop-off area at Core E, Cyberport 3

Cyberport Facilities Management Office:  
Unit 404, L4, IT Street, Core A,  
Cyberport 3, 100 Cyberport Road, Hong Kong  
Tel: 3166-3111 Email: [cs@cyberport.com.hk](mailto:cs@cyberport.com.hk)



The Annex, Cyberport (Outside McDonald's Restaurant)



**Route 4B: Hang Hau – Evening Service 18:15**

Cyberport (Annex) → Hang Hau (Man Kuk Lane)



The Annex, Cyberport (Outside McDonald's Restaurant)



Man Kuk Lane, Hang Hau

Cyberport Facilities Management Office:  
Unit 404, L4, IT Street, Core A,  
Cyberport 3, 100 Cyberport Road, Hong Kong  
Tel: 3166-3111 Email: [cs@cyberport.com.hk](mailto:cs@cyberport.com.hk)

**Route 5A: Lam Tin – Morning Services 08:10 / 08:20**

Lam Tin (Sin Fat Road) → Cyberport (Cyberport 3 → Annex)



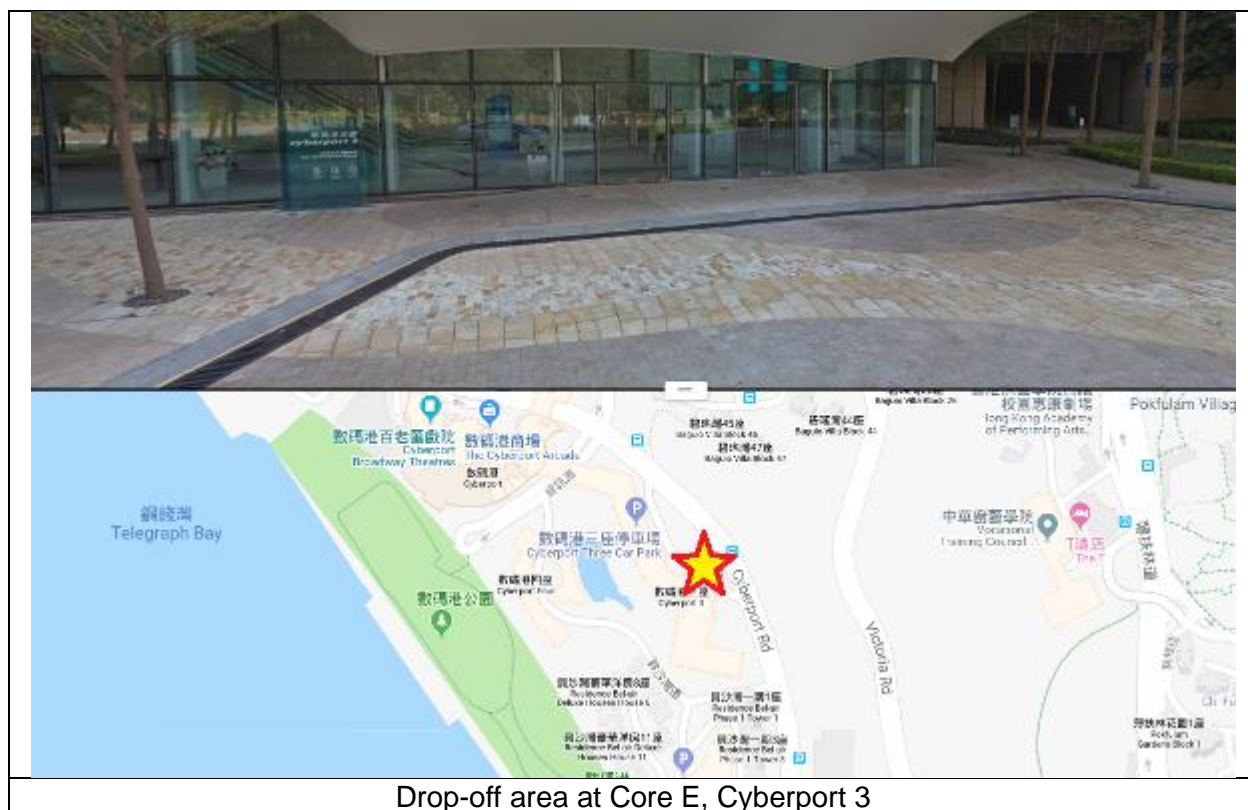
Sin Fat Road, Lam Tin (Next to MTR Exit D1) – near Chelsea Soccer Pitch



The Annex, Cyberport (Outside McDonald's Restaurant)

Cyberport Facilities Management Office:  
Unit 404, L4, IT Street, Core A,  
Cyberport 3, 100 Cyberport Road, Hong Kong  
Tel: 3166-3111 Email: [cs@cyberport.com.hk](mailto:cs@cyberport.com.hk)





**Route 5B: Lam Tin – Evening Service 18:10 / 18:20**

Cyberport (Annex) → Lam Tin (Sin Fat Road)



The Annex, Cyberport (Outside McDonald's Restaurant)



Sin Fat Road, Lam Tin (Next to MTR Exit D1) – near Chelsea Soccer Pitch



**Route 6A: Sheung Wan Route – Morning Services 08:20 / 08:45**

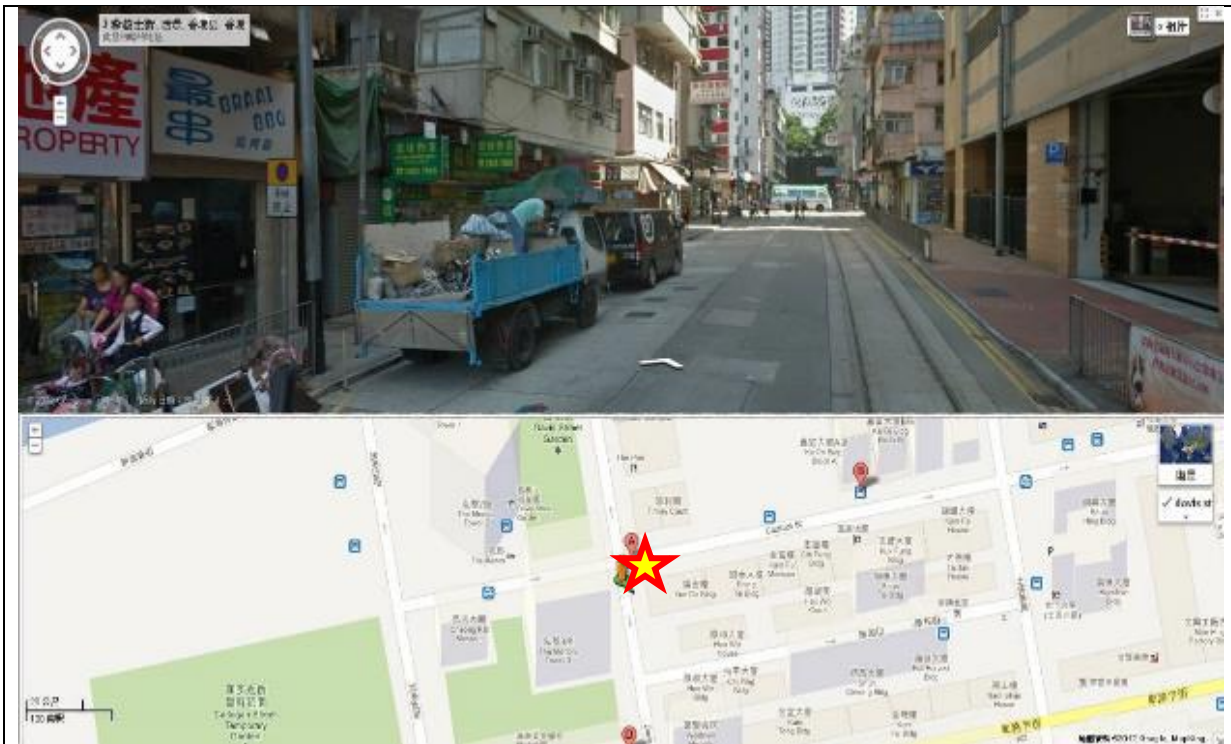
Sheung Wan (Wing On Centre, Connaught Road Central) →  
Sai Wan (Connaught Garden, Connaught Road West) →  
Kennedy Town (Davis Street) → Cyberport (Annex → Cyberport 3)



Wing On Centre, Connaught Road Central, Sheung Wan



Connaught Garden, Connaught Road West, Sai Wan

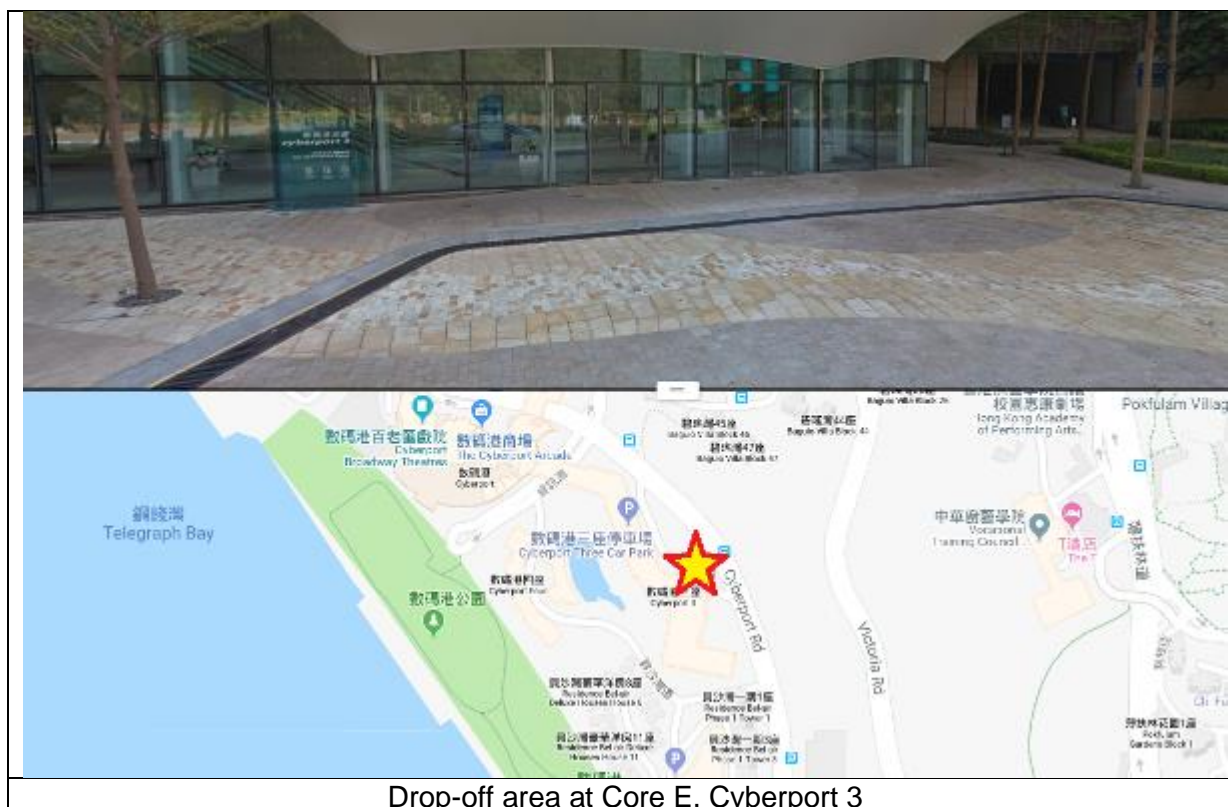


Davis Street, Kennedy Town



The Annex, Cyberport (Outside McDonald's Restaurant)





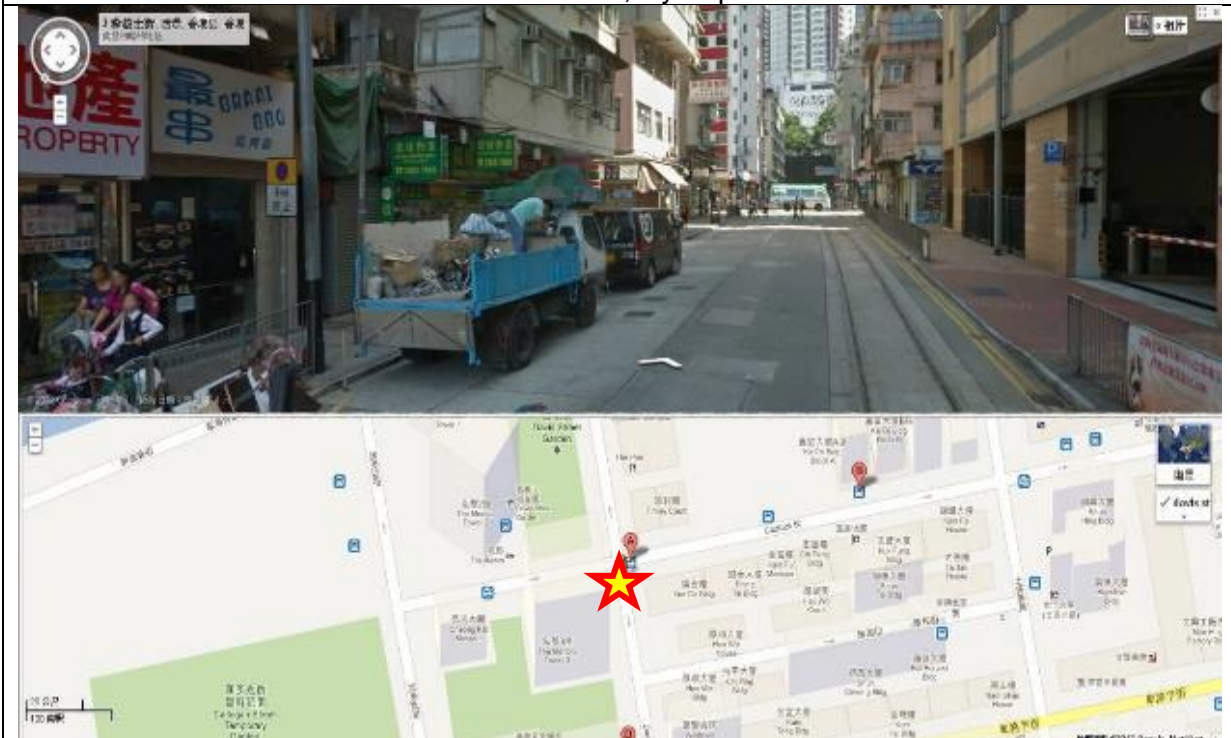
Drop-off area at Core E, Cyberport 3

**Route 6B: Sheung Wan Route – Evening Services 18:10 / 18:40**

Cyberport (Arcade) → Kennedy Town (Davis Street)  
Sheung Wan (Wing On Centre, Connaught Road Central)  
Sai Wan (Connaught Garden, Connaught Road West)



The Arcade, Cyberport



Davis Street, Kennedy Town

Cyberport Facilities Management Office:  
Unit 404, L4, IT Street, Core A,  
Cyberport 3, 100 Cyberport Road, Hong Kong  
Tel: 3166-3111 Email: [cs@cyberport.com.hk](mailto:cs@cyberport.com.hk)





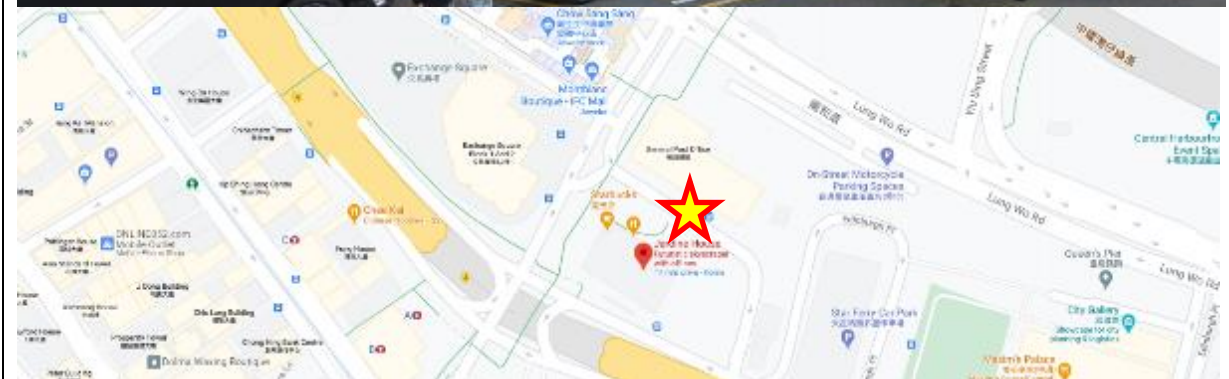
Wing On Centre, Connaught Road Central, Sheung Wan



Connaught Garden, Connaught Road West, Sai Wan

**Route 7A: Central Route – Morning Services 08:30**

Central (Connaught Place, Jardine House) → Kennedy Town (Sands Street) →  
Cyberport 2 → Cyberport 3



Central (Connaught Place, Jardine House)



Kennedy Town (Sands Street)

Cyberport Facilities Management Office:  
Unit 404, L4, IT Street, Core A,  
Cyberport 3, 100 Cyberport Road, Hong Kong  
Tel: 3166-3111 Email: [cs@cyberport.com.hk](mailto:cs@cyberport.com.hk)





Drop-off area at Cyberport 2



Drop-off area at Core E, Cyberport 3

**Route 7B: Central Route – Evening Services 17:35 / 18:00/ 18:30/ 19:00 / 19:30 / 20:00**

Cyberport Facilities Management Office:  
Unit 404, L4, IT Street, Core A,  
Cyberport 3, 100 Cyberport Road, Hong Kong  
Tel: 3166-3111 Email: [cs@cyberport.com.hk](mailto:cs@cyberport.com.hk)

Cyberport 2 → Kennedy Town (Davis Street) → Central (Man Kwong Street) → Hong Kong Station (Man Cheung Street)



Cyberport 2



Kennedy Town (Davis Street)





Central (Man Kwong Street)



Hong Kong Station (Man Cheung Street)

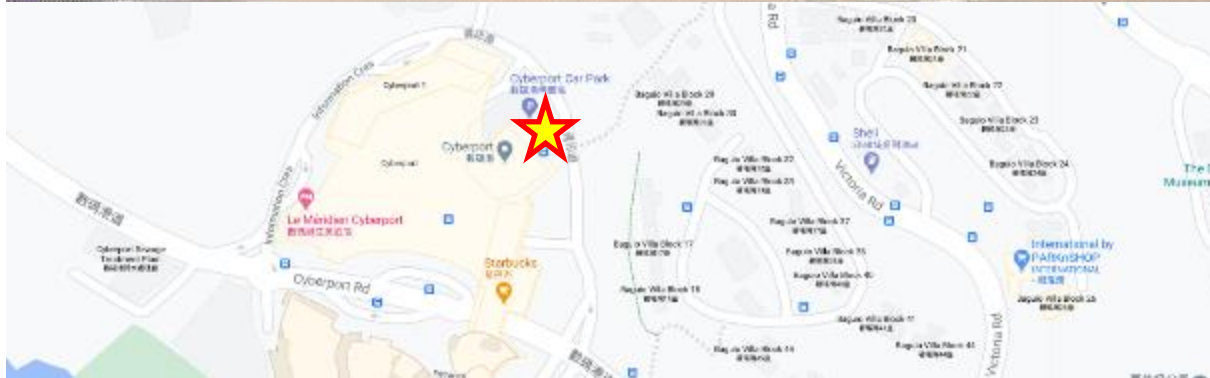
**Route 8A: Causeway Bay Route – Morning Services 08:35**

Causeway Bay (Sunning Road) → Cyberport 2 → Cyberport 3



Causeway Bay (Sunning Road)





Drop-off area at Cyberport 2



Drop-off area at Core E, Cyberport 3

**Route 8B: Causeway Bay Route – Evening Services 17:35/ 18:00/ 18:30**

Cyberport 2 → Aberdeen (Aberdeen Praya Road) → Causeway Bay (Sunning Road)



Cyberport 2



Aberdeen (Aberdeen Praya Road)

Cyberport Facilities Management Office:  
Unit 404, L4, IT Street, Core A,  
Cyberport 3, 100 Cyberport Road, Hong Kong  
Tel: 3166-3111 Email: [cs@cyberport.com.hk](mailto:cs@cyberport.com.hk)





Causeway Bay (Sunning Road)



**Route 9A: Mong Kok Route – Morning Services 08:20**

Mong Kok (Yim Po Fong Street) → Mong Kok (Sai Yeung Choi Street South) →  
Olympic (Cherry Street) → Cyberport 2 → Cyberport 3



Mong Kok (Yim Po Fong Street)



Mong Kok (Sai Yeung Choi Street South)

Cyberport Facilities Management Office:  
Unit 404, L4, IT Street, Core A,  
Cyberport 3, 100 Cyberport Road, Hong Kong  
Tel: 3166-3111 Email: [cs@cyberport.com.hk](mailto:cs@cyberport.com.hk)

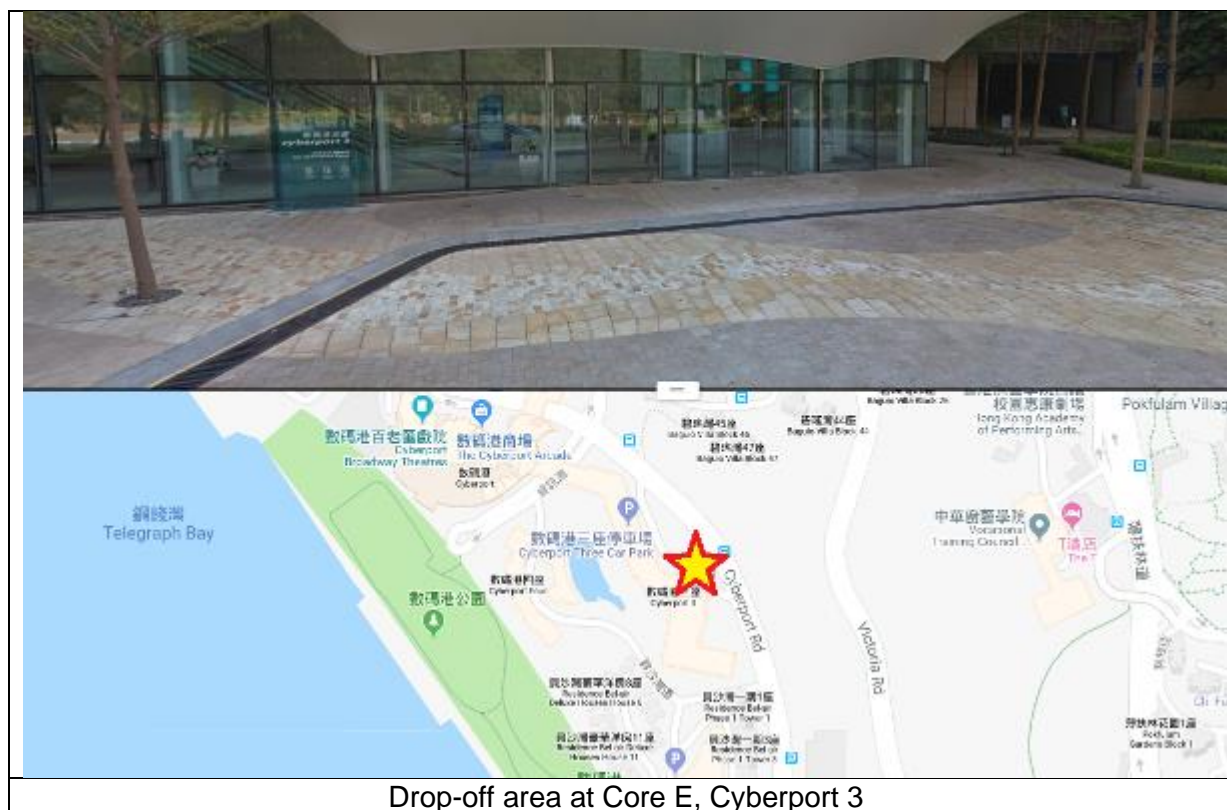




Olympic (Cherry Street)



Drop-off area at Cyberport 2



Drop-off area at Core E, Cyberport 3



**Route 9B: Mong Kok Route – Evening Services 17:45 / 18:20**

Cyberport 2 → Olympic (Pok Man Street) → Yau Ma Tei (City View Hotel) → Mong Kok (Yim Po Fong Street) → Mong Kok East (Argyle Street)



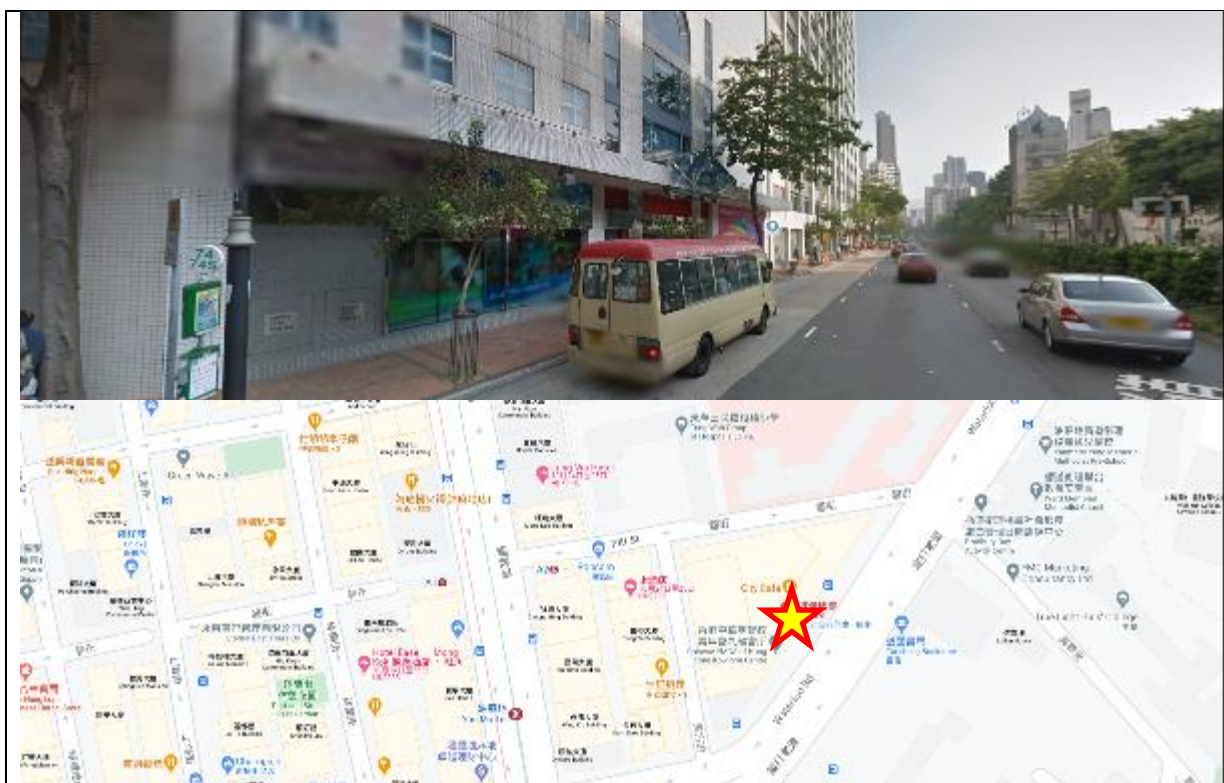
Cyberport 2



Olympic (Pok Man Street)

Cyberport Facilities Management Office:  
Unit 404, L4, IT Street, Core A,  
Cyberport 3, 100 Cyberport Road, Hong Kong  
Tel: 3166-3111 Email: [cs@cyberport.com.hk](mailto:cs@cyberport.com.hk)





Yau Ma Tei (City View Hotel)



Mong Kok (Yim Po Fong Street)





**Route 10A: Yau Tong Route – Morning Services 08:10 / 08:15**

Yau Tong (Cha Kwo Ling Road) → Taikoo Shing (Taikoo Shing Road)  
Cyberport 2 → Cyberport 3

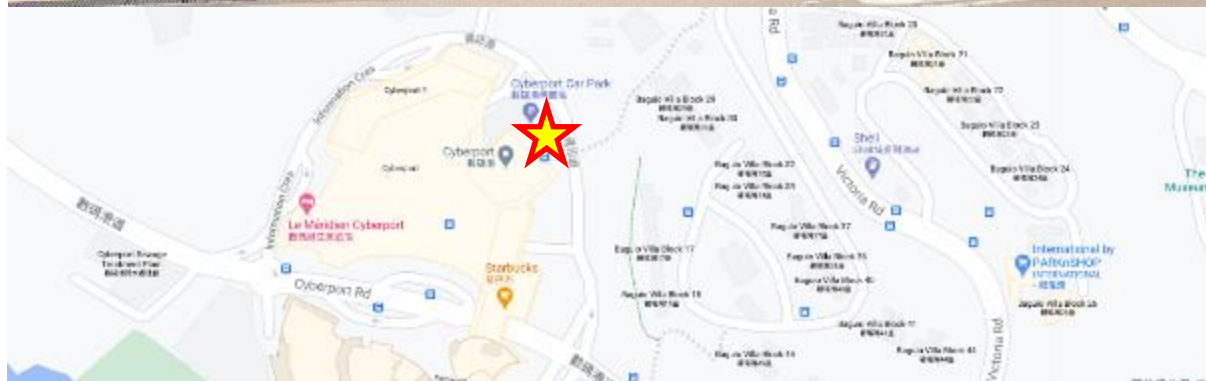


Yau Tong (Cha Kwo Ling Road)



Taikoo Shing (Taikoo Shing Road)

Cyberport Facilities Management Office:  
Unit 404, L4, IT Street, Core A,  
Cyberport 3, 100 Cyberport Road, Hong Kong  
Tel: 3166-3111 Email: [cs@cyberport.com.hk](mailto:cs@cyberport.com.hk)



Drop-off area at Cyberport 2

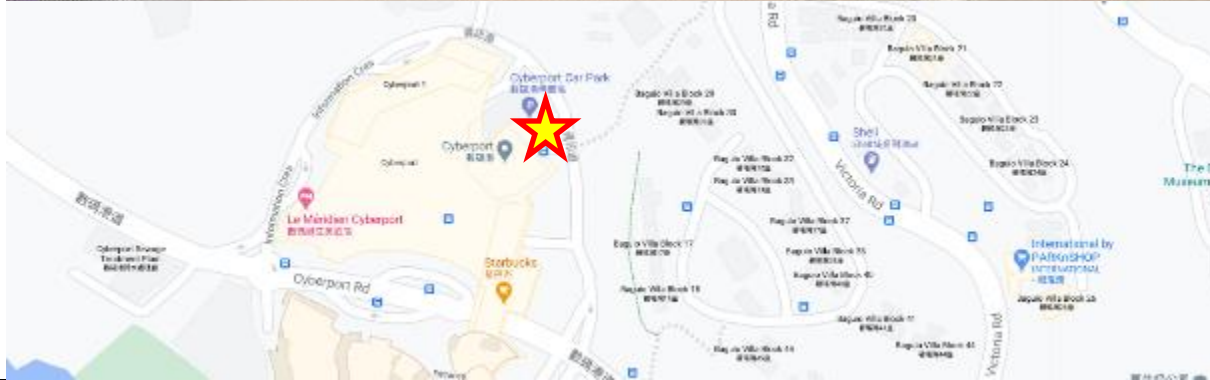


Drop-off area at Core E, Cyberport 3



**Route 10B: Yau Tong Route – Evening Services 17:45 / 18:15**

Cyberport 2 → Taikoo Shing (Taikoo Shing Road) → Yau Tong (Cha Kwo Ling Road)



Cyberport 2



Taikoo Shing (Taikoo Shing Road)





**Route 11A: Yuen Long Route – Morning Services 07:20**

Yuen Long (Wang Lok Street) → Tuen Mun (Heung Sze Wui Road) →  
Tsuen Wan (Tai Ho Road North Southbound bus stop) → Annex → Cyberport 3



Yuen Long (Wang Lok Street)



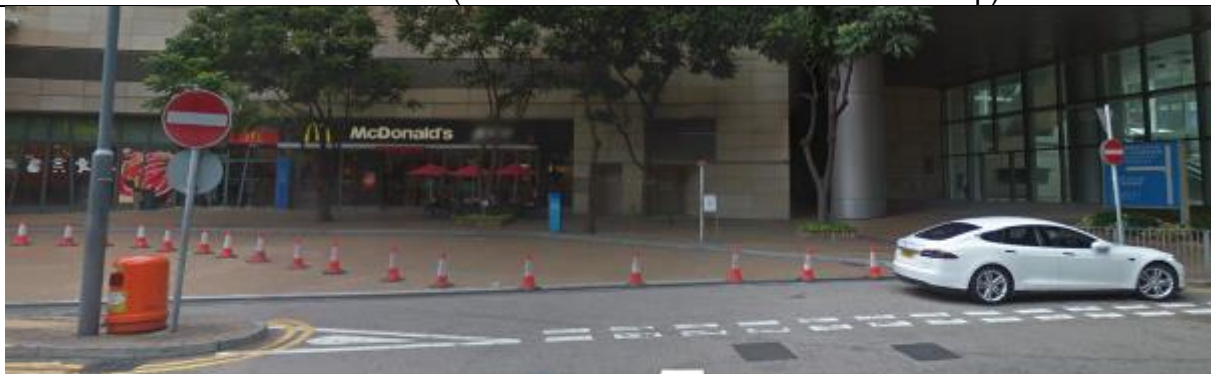
Tuen Mun (Heung Sze Wui Road)

Cyberport Facilities Management Office:  
Unit 404, L4, IT Street, Core A,  
Cyberport 3, 100 Cyberport Road, Hong Kong  
Tel: 3166-3111 Email: [cs@cyberport.com.hk](mailto:cs@cyberport.com.hk)





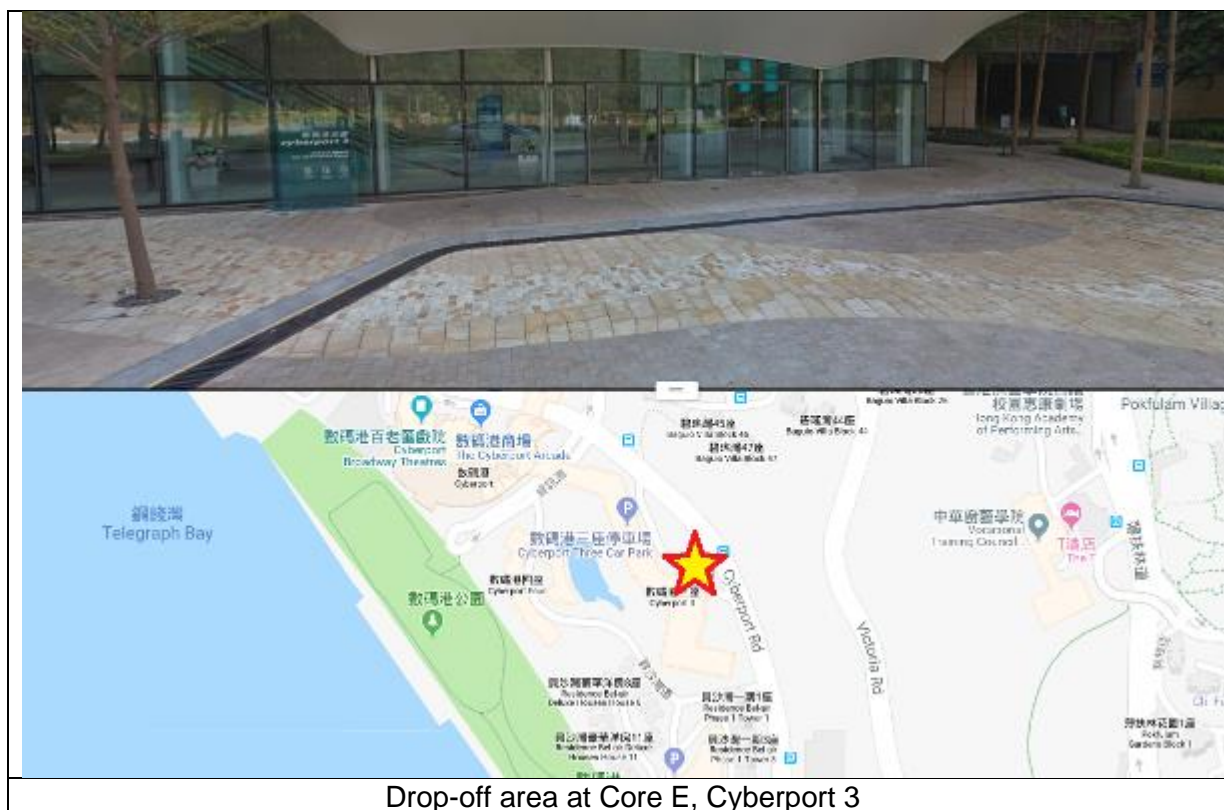
Tsuen Wan (Tai Ho Road North Southbound bus stop)



The Annex, Cyberport

Cyberport Facilities Management Office:  
Unit 404, L4, IT Street, Core A,  
Cyberport 3, 100 Cyberport Road, Hong Kong  
Tel: 3166-3111 Email: [cs@cyberport.com.hk](mailto:cs@cyberport.com.hk)





Drop-off area at Core E, Cyberport 3

**Route 11B: Yuen Long Route – Evening Services 18:15**

Cyberport 3 → Tsuen Wan (Tai Ho Road North Southbound bus stop) →  
Tuen Mun (Heung Sze Wui Road) → Yuen Long (Wang Lok Street)



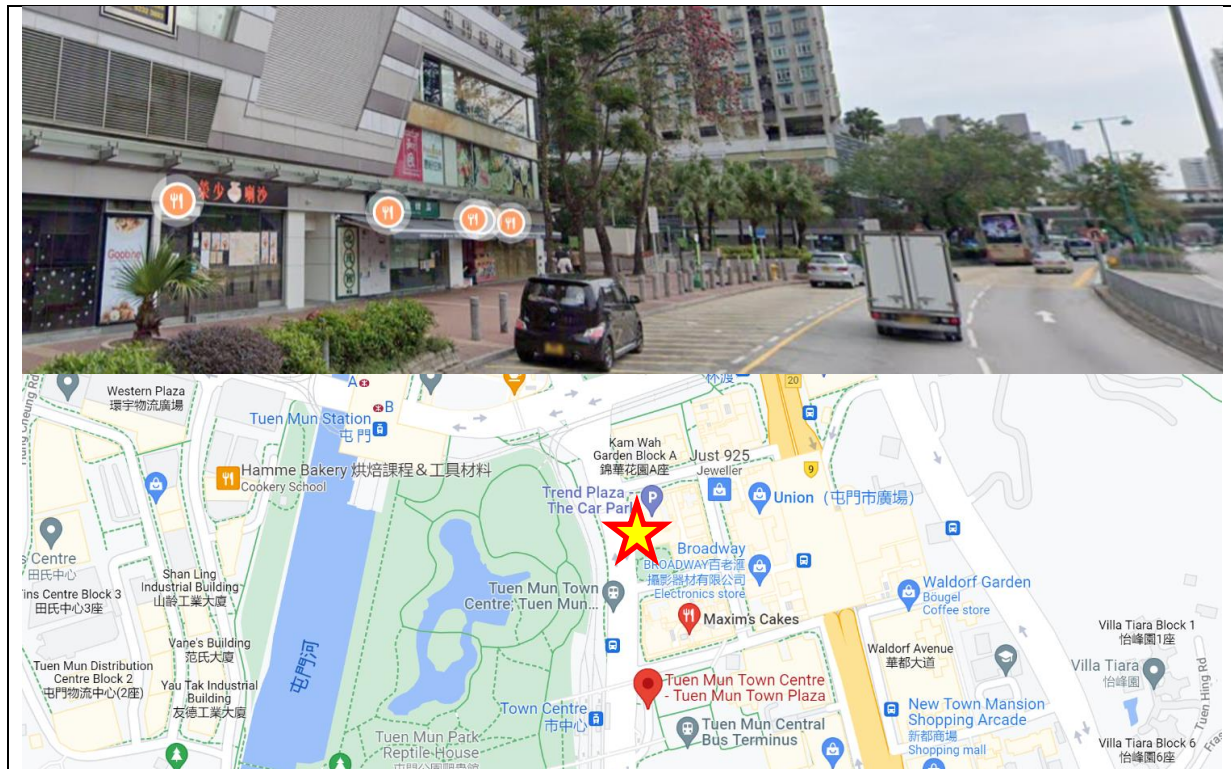
Drop-off area at Core E, Cyberport 3



Tsuen Wan (Tai Ho Road North Southbound bus stop)

Cyberport Facilities Management Office:  
Unit 404, L4, IT Street, Core A,  
Cyberport 3, 100 Cyberport Road, Hong Kong  
Tel: 3166-3111 Email: [cs@cyberport.com.hk](mailto:cs@cyberport.com.hk)





Tuen Mun (Heung Sze Wui Road)



Yuen Long (Wang Lok Street)

**Terms and Conditions**

1. Passengers should arrive at the boarding point 5 minutes before the departure time.
2. The bus operator will not accept any liability whatsoever except those taken up by vehicle's insurer in accordance with the terms and conditions written on the Certificate of Insurance issued to the vehicles as required by the Motor Vehicles Insurance (Third Party Risks) Ordinance.
3. In case of disputes, Hong Kong Cyberport Management Company Ltd and its appointed facilities management service provider reserves the right of final decision.